

# CREATING A SUSTAINABLE COMMUNITY

PAM O'CONNOR  
MAYOR  
CITY OF SANTA MONICA

PAST PRESIDENT, SOUTHERN  
CALIFORNIA ASSOCIATION  
OF GOVERNMENTS

NEW PARTNERS FOR  
SMART GROWTH CONFERENCE



# SUSTAINABLE COMMUNITIES

## 2 Perspectives

- Municipality – City of Santa Monica
- Metropolitan Region – Southern California Association of Governments

# CITY OF SANTA MONICA

## **Population**

- 90,000 residents
- Daytime population 250,000+
- Millions of annual visitors

## **Land Area**

- 8.3 square miles

## **Economy**

- Tourism, Entertainment
- Retail, Office
- Health Care, High Tech

## **Land Use & Circulation Issues**

- Pressure for Infill Development & Intensification
- Desire for mixed-use residential
- No opportunity for roadway expansion
- Economic health brings traffic impacts

# CREATING A SUSTAINABLE COMMUNITY

The Santa Monica Sustainable City Plan was created to enhance our resources, prevent harm to the natural environment and human health, **and benefit the social and economic well-being of the community** for the sake of current and future generations.



# CREATING A SUSTAINABLE COMMUNITY

- Sustainable City Plan
- Adopted in 1994
- Performance indicators
- Data driven policy tool
- Comprehensive approach
- Recently updated for 2020

[www.sustainable-sm.org](http://www.sustainable-sm.org)



# SUSTAINABLE CITY PLAN GOAL AREAS

- Resource Conservation
- Environmental and Public Health
- Transportation
- Economic Development
- Arts and Culture
- Housing
- Open Space and Land Use
- Community Education and Civic Participation
- Human Dignity

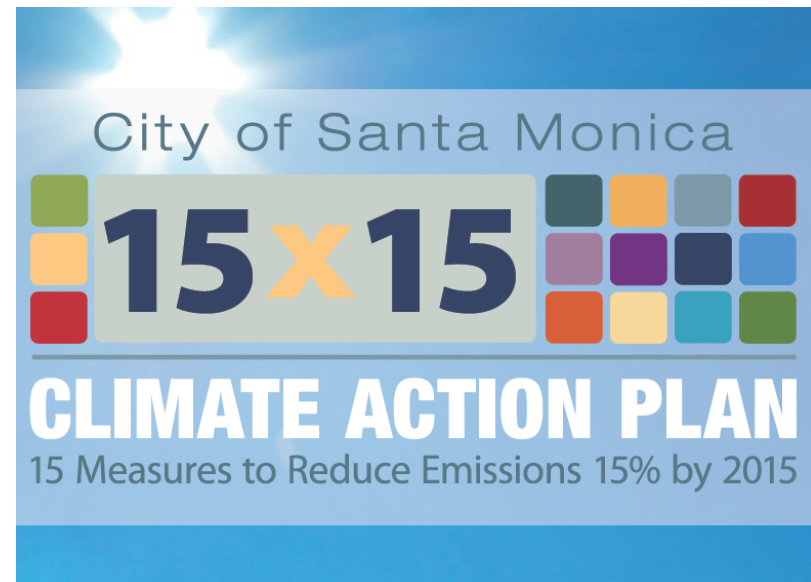
# SUSTAINABLE SANTA MONICA



## SUSTAINABLE CITY REPORT CARD

# CLIMATE MITIGATION

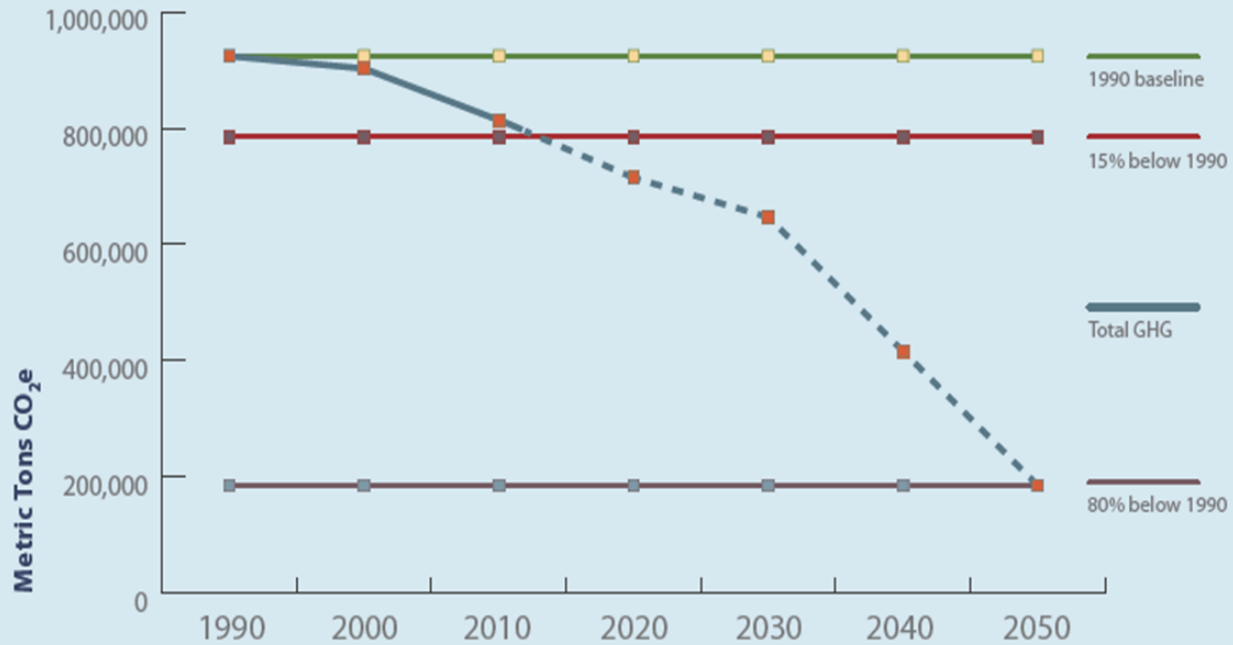
- 15X15 Climate Action Plan
- 15 measures
- Completed by 2015
- Reduce emissions 15% below 1990 levels
- Community emissions
- Includes adaptation





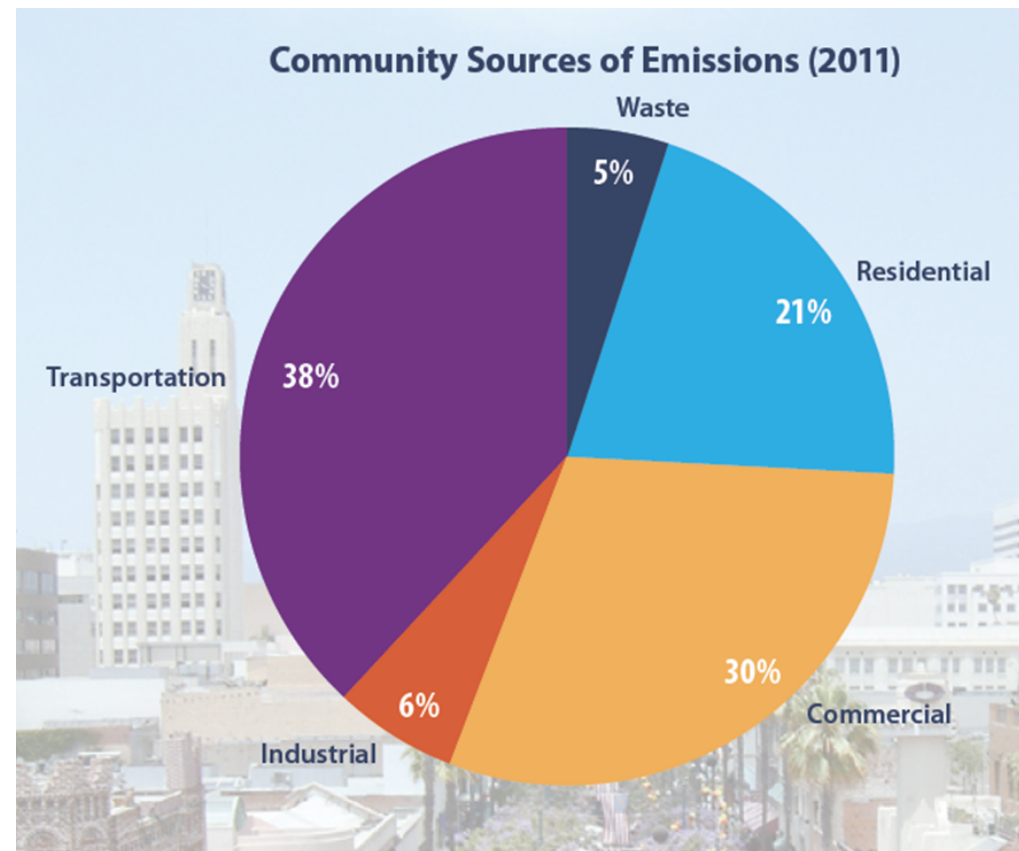
# PROPOSED TARGETS

## Santa Monica's Greenhouse Gas Emissions and Reduction Goals



# 15 x 15 CLIMATE ACTION PLAN

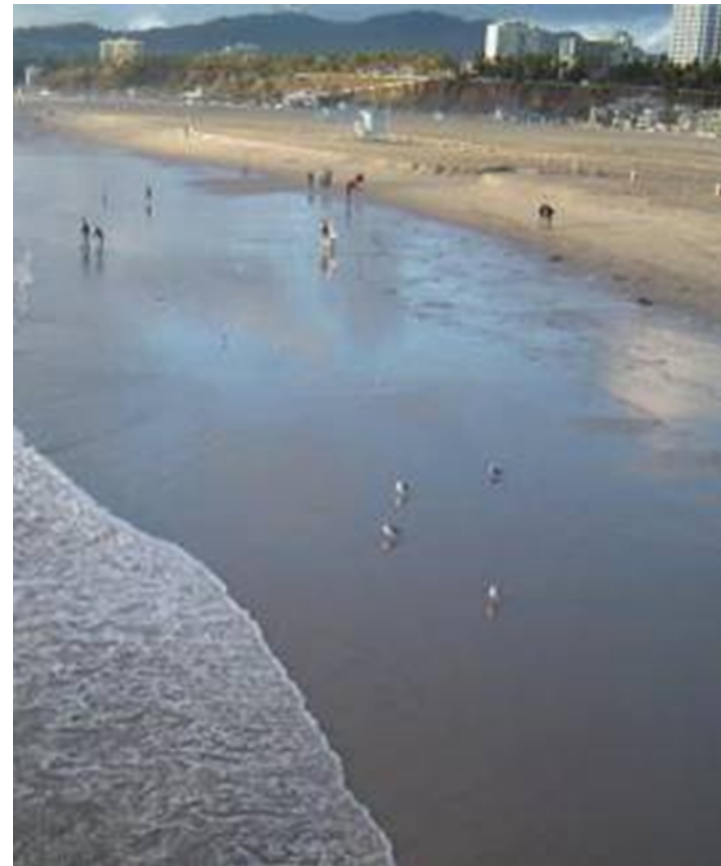
- 2007 inventory revealed 7% reduction
- Additional 7% reduction between 2007 and 2012
- Currently, 14% reduction below 1990 levels



# CLIMATE ADAPTATION

## Climate Adaptation

- Water Self Sufficiency Plan
- Green Infrastructure for storm water management
- Long range planning on physical, social and economic vulnerabilities related to climate change
- Prepare and respond



# CLIMATE ADAPTATION

## Ocean Park Boulevard

- Stormwater percolation
- Sustainable planting
- Active transportation
- Neighborhood quality of life



# LUCE (LAND USE & CIRCULATION ELEMENT)



- Integrated Land Use and Transportation
- Proactive Congestion Management
- Quality Urban Character and Form

# LUCE (LAND USE & CIRCULATION ELEMENT)

## INTEGRATION OF LAND USE AND TRANSPORTATION MULTI-PRONGED APPROACH:



- Street Improvements/ Roadway Management
- Connection to Light Rail
- Shared & Managed Parking
- Bicycle Facilities and Improvements
- Comfortable, Safe and Connected Pedestrian Facilities

# SMART GROWTH THROUGH TRANSIT AREA PLANNING

- Expo Light Rail –  
3 stations in City
- Connects City to region
- Station Area Plans focus  
density near transit



# SCAG QUICK FACTS

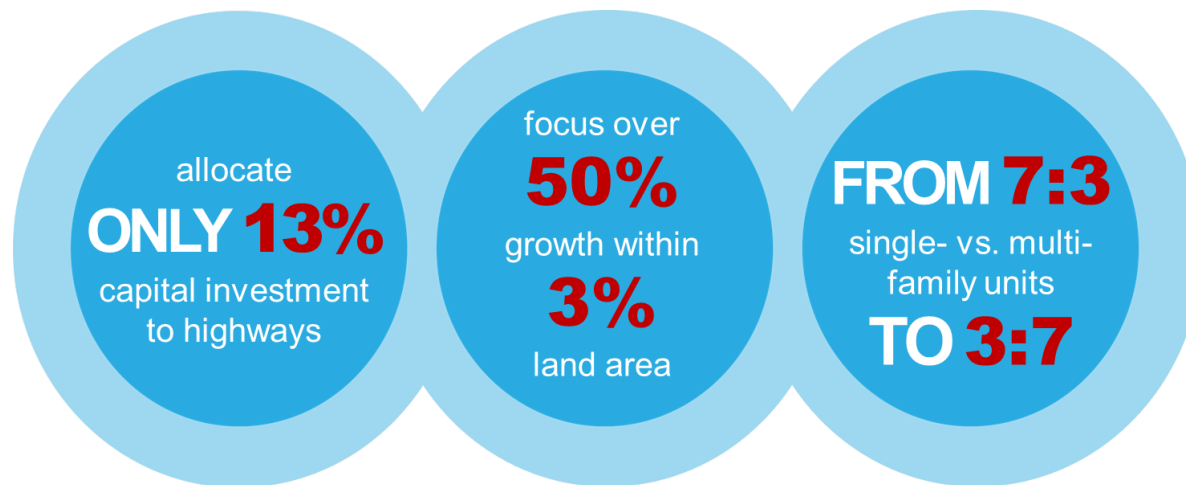


- Nation's largest Metropolitan Planning Organization (MPO) and Council of Governments (COG)
- 6 counties, 191 cities and over 18 million residents
- Governed by a Regional Council of 84 local elected officials
- 17<sup>th</sup> largest economy in the world
- 9,000 lane miles of freeway
- 4 major airports
- Nation's global gateway for trade



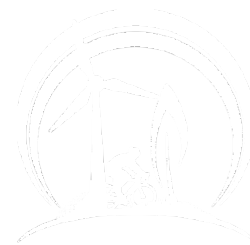
# 2012 RTP/SCS HIGHLIGHTS

- Land Use Efficiency
- Massive New Investment in Active Transportation
- Transit Expansion/Limited Road Building
- Innovative Finance/User Fees



# IMPLEMENTATION HIGHLIGHTS

- Sustainability Program
  - 73 projects, \$10m demand
- MOUs/Joint Work Programs
  - 2 counties in place, others in progress
- Active Transportation
  - Collaboration, key projects underway
- Transit Expansion
  - Key projects completed, under construction
- Transportation Finance/Pricing
  - Completed Initial Pricing Study



sustainability  
PROGRAM



Metro





sustainability  
PROGRAM

THE



ACTIVE   
Transportation

- Region-wide Call For Proposals
  - 73 eligible projects
  - \$10 million total funding need
- Direct tie to SCS policies, implementation emphasis

  
Green Region  
Initiative

# JOINT WORK PROGRAMS WITH CTCs

- Los Angeles County Metro (adopted October 2012)
- SANBAG (anticipated adopted February 2013)
- ICTC (anticipated adopted March 2013)
- \$230,000 committed to date
- Others in progress
- Identify joint initiatives including:
  - Active Transportation acceleration
  - Safe Routes to School
  - Land Use/corridor planning
  - Others



**THANK YOU!**

**ANY QUESTIONS?**